



„Hamburg Alster Scenery & Alster Boat Traffic“

Manual

Table of Contents

End User License Agreement.....	3
The Alster - river and lake in the heart of Hamburg	4
Installation.....	5
Uninstall.....	7
The Configurator	8
SimDocks-Forum.....	9

End User License Agreement

This End User License Agreement is a legal agreement between you (as a natural or legal person, hereinafter referred to as Licensee) and Manfred Siedler (SimDocks.de), which may include computer software, related media, printed materials, documentation and electronic documentation (hereinafter referred as "SOFTWARE").

By downloading and installing the SOFTWARE, the Licensee agrees to be bound by the terms of this End User License Agreement.

If you do not agree (as licensee), you are not authorized to install or use this SOFTWARE.

The SOFTWARE is licensed, not sold.

Installation and intended use.

The licensee is entitled to install the SOFTWARE on ONE computer and to use it as intended. Use is permitted only for private, non-commercial use.

Reproduction and distribution

The Licensee may not distribute any copy (s) of this SOFTWARE or its parts, or make any portion of the SOFTWARE available to other parties via the Internet or through any other ways.

The licensee is only allowed to make a reserve copy, which may only be used for hedging purposes.

It is expressly forbidden to copy or duplicate the software as well as the written material in whole or in part in original or modified form, or in a form that is combined with other software or included in another software.

Reverse engineering, decompilation and disassembly.

Licensee may not reverse engineer, decompile, or disassemble the SOFTWARE.

The SOFTWARE is licensed as a coherent product. The licensee is not authorized to separate components of the SOFTWARE for use on more than one computer.

The Licensee is not entitled to transfer its rights to another person under this End User License Agreement. Proof of the legal ownership of the aforementioned rights of the licensee is the purchase receipt (invoice).

Without prejudice to other rights, SimDocks.com is entitled to terminate this End User License Agreement if Licensee violates the terms of this End User License Agreement. In such a case, the licensee is obligated to destroy all copies of the SOFTWARE and all its components at its own expense.

Authorship

The SOFTWARE is protected by copyright.

Copyright also includes program code, documentation, appearance, structure and organization of program files, program names, logos, images and other forms of representation within the software and all its components. All rights are reserved and protected by international treaties and laws on copyright protection.

The licensee recognizes that the software is a protected computer program within the meaning of § 2 para. 1 no. 1, § 69 a and that SimDocks.de is the author in the sense of §§ 7, 69 b of German copyright laws.

Limited Warranty

SimDocks hereby expressly declares that it must reject any warranty claims for the SOFTWARE.

The SOFTWARE and all related documentation is provided "as it is", without warranty, express or implied, including, but not limited to, statutory warranties, merchantability, fitness for a particular purpose, or infringement. You bear the full risk from the use or performance of the SOFTWARE.

Limitation of liability

SimDocks or its suppliers shall in no event be liable for any damages (including but not limited to claims for loss of business profits, business interruption, loss of business information or any other financial loss) arising out of the use or inability to use this SOFTWARE, even if SimDocks has been informed of the possibility of such damages.

The Alster - river and lake in the heart of Hamburg

The Alster is a 56 kilometer long tributary of the river Elbe and flows through the southern Schleswig-Holstein and Hamburg. The most famous and most striking part of the Alster is the Alster lake, which is formed in the middle of Hamburg's city by the "Binnenalster" (inner Alster) and the "Außenalster" (outer Alster).

The Alster lake was built in 1190 under Count Adolf III. by congestion of the river with a dam, to serve as a mills pond for the operation of a large corn mill. The at that time uninhabited "Alsterwiesen" (Alster grasslands) were flooded wide-ranging. After the later tenant Reese received the dam first the name "Reesedamm". After several widenings, the dam got its present name "Jungfernstieg".

Not until 1616 to 1625 was the mills pond separated by the erection of the Hamburg rampart in the outer and inner Alster.

The "Outer Alster" is 164 hectares large and up to 4,5 meters deep. It is the larger, northern part of Lake Alster. The Alsterpark is located around the "Outer Alster. Here, with a few exceptions, one has a clear view of the Alster.

Around the "Outer Alster" are walking and cycling trails, which are popular with the Hamburg population for recreation and jogging. The jogging track, which is almost directly on the shore, is marked with kilometer stones every 500 meters and is 7.4 kilometers long.

The "Outer Alster" itself is mainly used for sailing and rowing as well as for pedal boating and standup paddling. As a sailing reef, it is considered to be a little difficult, as the shore building and the approaching roads often lead to varying wind conditions which require some skill from the sailors.

The most popular residential areas of Hamburg are located on the "Outer Alster". This is where the upper class of Hamburg and the consulates and embassies of many nations are located.

The "Inner Alster" has an area of about 18 hectares. It is the smaller, southern part of Lake Alster. It is fed by the "Outer Alster" in the north-east and flows in the southern corner at the Jungfernstieg in the direction of the Elbe.

On a floating pontoon in the middle of the "Inner Alster" is the up to 60 meters high "Alster fountain".

In the Christmas season, this fountain is replaced by a 15-meter high Christmas tree with many lights.

In the remaining winter months from January to April, the fountain is not operated.

There are various business buildings around the Binnenalster, including the headquarters of the "Hapag-Lloyd AG", the "Hotel Vier Jahreszeiten" (Hotel Four Seasons), the traditional department store "Alsterhaus" (Alster House) and the not less famous "Alsterpavillon".

On the southern bank, the "Jungfernstieg", is the main landing stage for the "white fleet" of the "Alsterdampfer" (excursion boats). The Alsterdampfer crosses the Alster lake, the Alster canals, the "Hamburger Fleete" (old port canals) and into the district "Bergedorf" (Mountain village) 20 km east.

Also in this addon is an excursion boat from the Jungfernstieg, through the port of Hamburg and the "Dove Elbe" to Bergedorf.

Installation

Step 1

Unzip the downloaded zip file.

If you do not have a SimDocks scenery folder yet,

copy the entire folder "**SimDocks**" to the folder where you save your scenery addons. This can be the Addon-Sceneries folder in the main directory of your simulator or a folder on another drive.

If you already have a SimDocks scenery folder,

copy the subfolder "**SimDocks_Alster**" from the downloaded "SimDocks" folder to your **existing SimDocks folder**.

Step 2

Open the file *simobjects.cfg* with the text editor (**NOT WordPad**) or with **Notepad ++** ([free Download](#)) at the path: **C:\ProgramData\Lockheed Martin\Prepar3D v4**.

Scroll down the file and add the following paragraph.

[Entry.*XX enter the ongoing number here*]

Title=SimDocks Alster Ships

Path=*Your drive:\ Your addon folder*\SimDocks\Simdocks_Alster\SimObjects

Required=False

Active=True

Save the file and close it.

Step 3

Open the file *effects.cfg* with the text editor (**NOT WordPad**) or with **Notepad ++** ([free Download](#)) at the path: **C:\ProgramData\Lockheed Martin\Prepar3D v4**.

Scroll down the file and add the following paragraph.

[Entry.*XX enter the ongoing number here*]

Title=SimDocks Alster Effects

Path=*Your drive:\ your addon folder*\SimDocks\Simdocks_Alster\Effects

Required=FALSE

Active=True

Save the file and close it.

Step 4

Open the file **sound.cfg** with the text editor (**NOT WordPad**) or with **Notepad ++** ([free Download](#)) at the path: **C:\ProgramData\Lockheed Martin\Prepar3D v4.**

Scroll down the file and add the following paragraph.

[Entry.*XX enter the ongoing number here*]

Title=SimDocks Alster Sounds

Path= *Your drive:\ your addon folder*\SimDocks\Simdocks_Alster\sound

Required=FALSE

Active=True

Save the file and close it

Step 5

Start your simulator and add the scenery to the "Scenery Library".
Sort the scenery that it is above all ORBX entries.

More AI-ships, routes, repaints etc. you can find at SimDocks.de



TT-Line ferries „Peter Pan“ and „Nils Holgerson“

USE THE TRANSLATION TOOL FOR OTHER LANGUAGES

LATEST NEWS

22.04.2016

Download für die Fähren der TT-Line „Peter Pan“ und „Nils Holgerson“ freigeschaltet.



Uninstall

Step 1

Delete the scenery from the Scenery Library of Your Simulator.

Step 2

Navigate to: **C:\ProgramData\Lockheed Martin\Prepar3D v4**

Delete the paragraphs you inserted during the installation from the files [SimObjects.cfg](#), [effects.cfg](#) and [sound.cfg](#).

ATTENTION!

Ensure that the sequence of the ongoing numbers [Entry.1] [Entry.2] and so on, is retained in the first line of each paragraph. There must be no gap in the ongoing numbering. If this is the case, adjust the numbers manually.

Step 3

Delete the folder "SimDocks_Alster"

Finished! You have now removed the scenery completely.

The Configurator

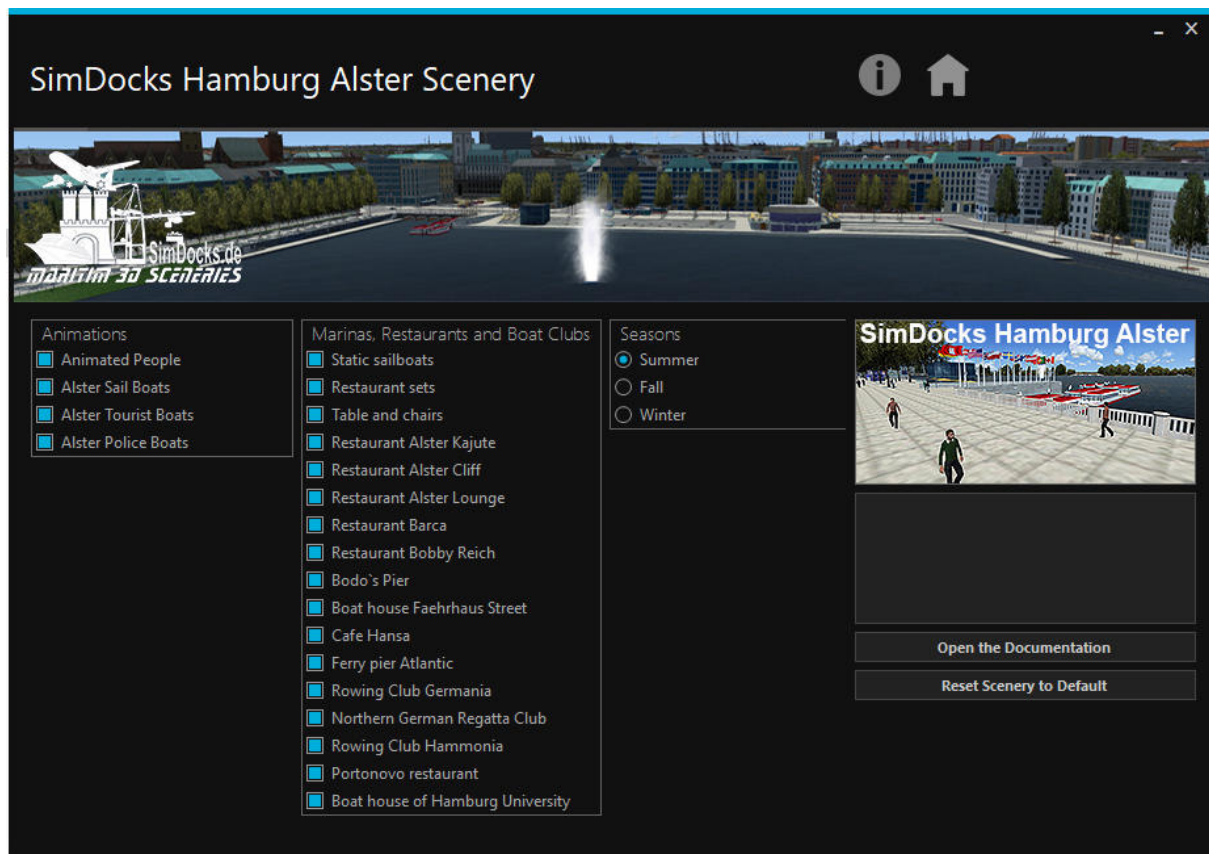
This scenery has many animations. This can lead to performance losses on slow/older computers. Therefore, I have provided the scenery with a configurator.

The configurator (provided by 29Palms) allows each pilot to customize the scenery according to his needs or the requirements of his PC.

In case of FPS problems, animations such as the "Living People" and/or the shipping traffic can be switched off individually. Many scenery parts can also be switched off individually if necessary. This can be carried out according to the requirements so far, until only the core scene remains.

The season switchover to summer, fall or winter can also be done via the Configurator and this documentation can also be opened via the configurator.

The upper "Open the Documentation" button opens the German documentation, the lower button the English documentation.

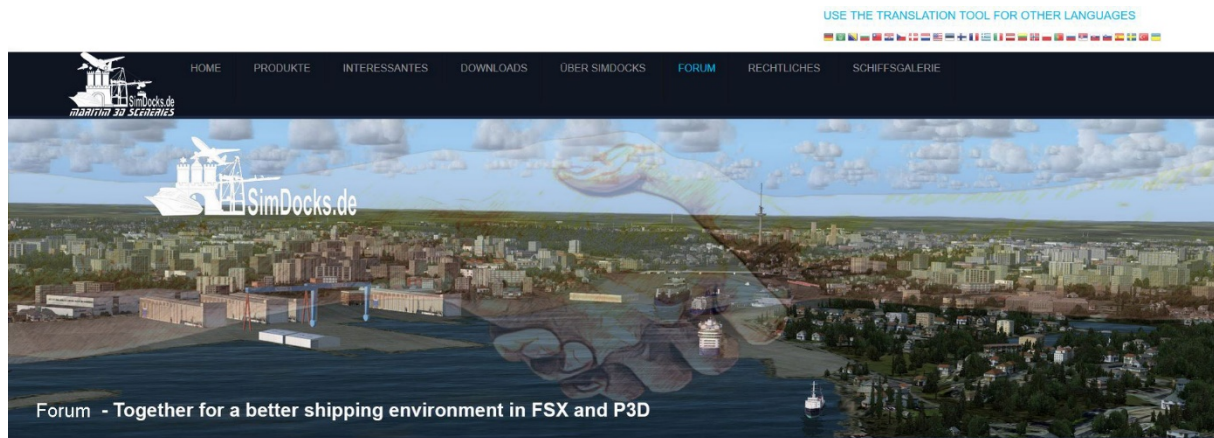


SimDocks-Forum

Do you have any requests, suggestions or questions about the AI ship traffic or my sceneries?

Well in this case the [SimDocks-Fourm](#) is the right place for you!

You can write in German or English. The entire website can be switched over via "Google Translate" into 28 languages. Use the small flags at the top of the website.



I wish you a lot of fun with the scenery

Manfred Siedler